

Pastors' Descriptions of In-person Worship Attendance

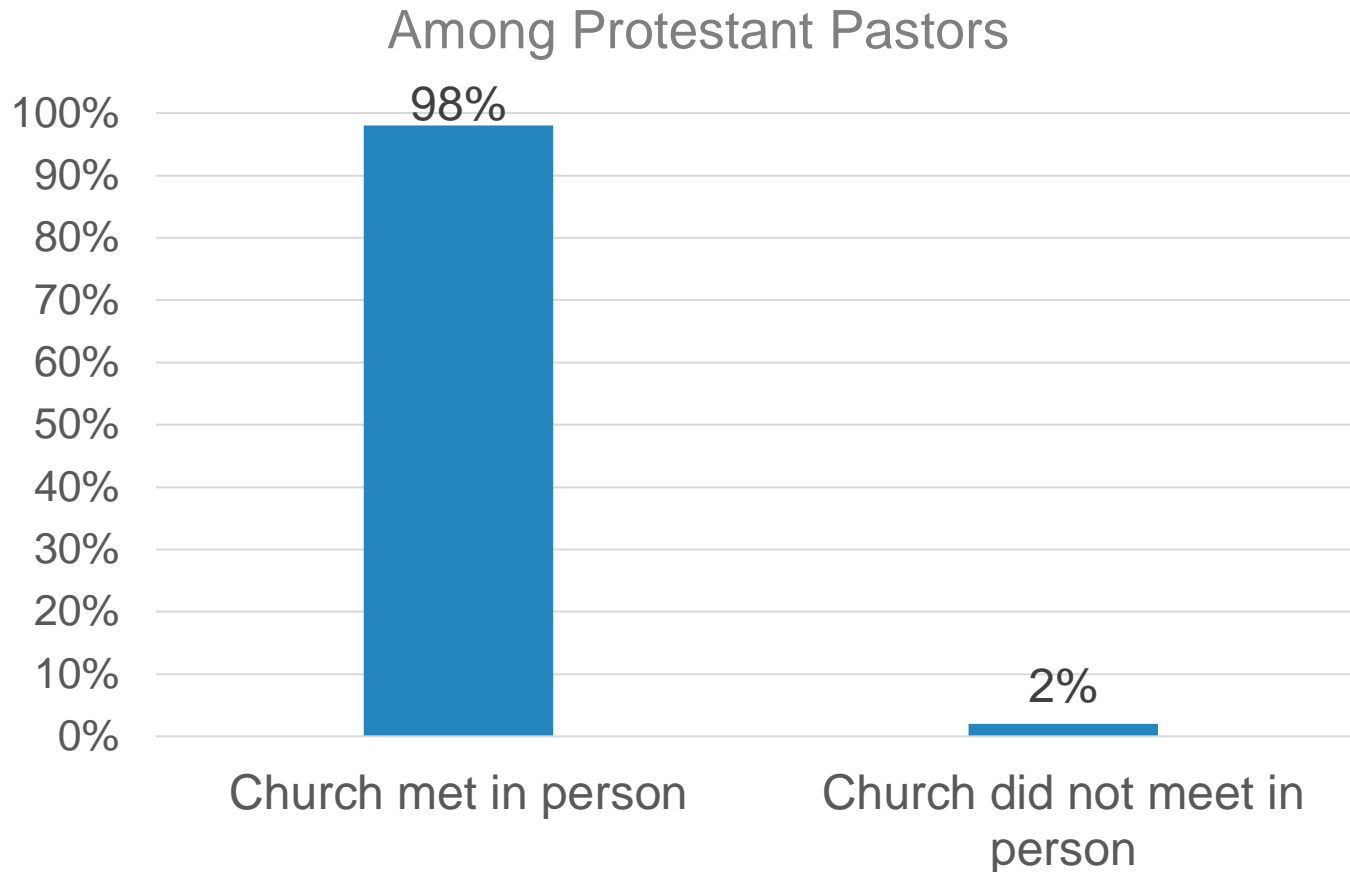
A SURVEY OF AMERICANS PROTESTANT PASTORS

Lifeway **research**

Methodology

- The phone survey of 1,000 Protestant pastors was conducted September 1-29, 2021
- The calling list was a stratified random sample, drawn from a list of all Protestant churches. Quotas were used for church size
- Each interviews was completed by the senior or sole pastor or a minister at the church
- Responses were weighted by region and church size to more accurately reflect the population
- The completed sample is 1,000 surveys
- The sample provides 95% confidence that the sampling error does not exceed $\pm 3.2\%$ This margin of error accounts for the effect of weighting
- Margins of error are higher in sub-groups
- Comparisons are made to the following Lifeway Research surveys: a mixed mode survey of 1,007 Protestant pastors September 2-October 1, 2020 and an online survey of 430 Protestant pastors February 1-11, 2021

98% of pastors say their church met in person in August 2021

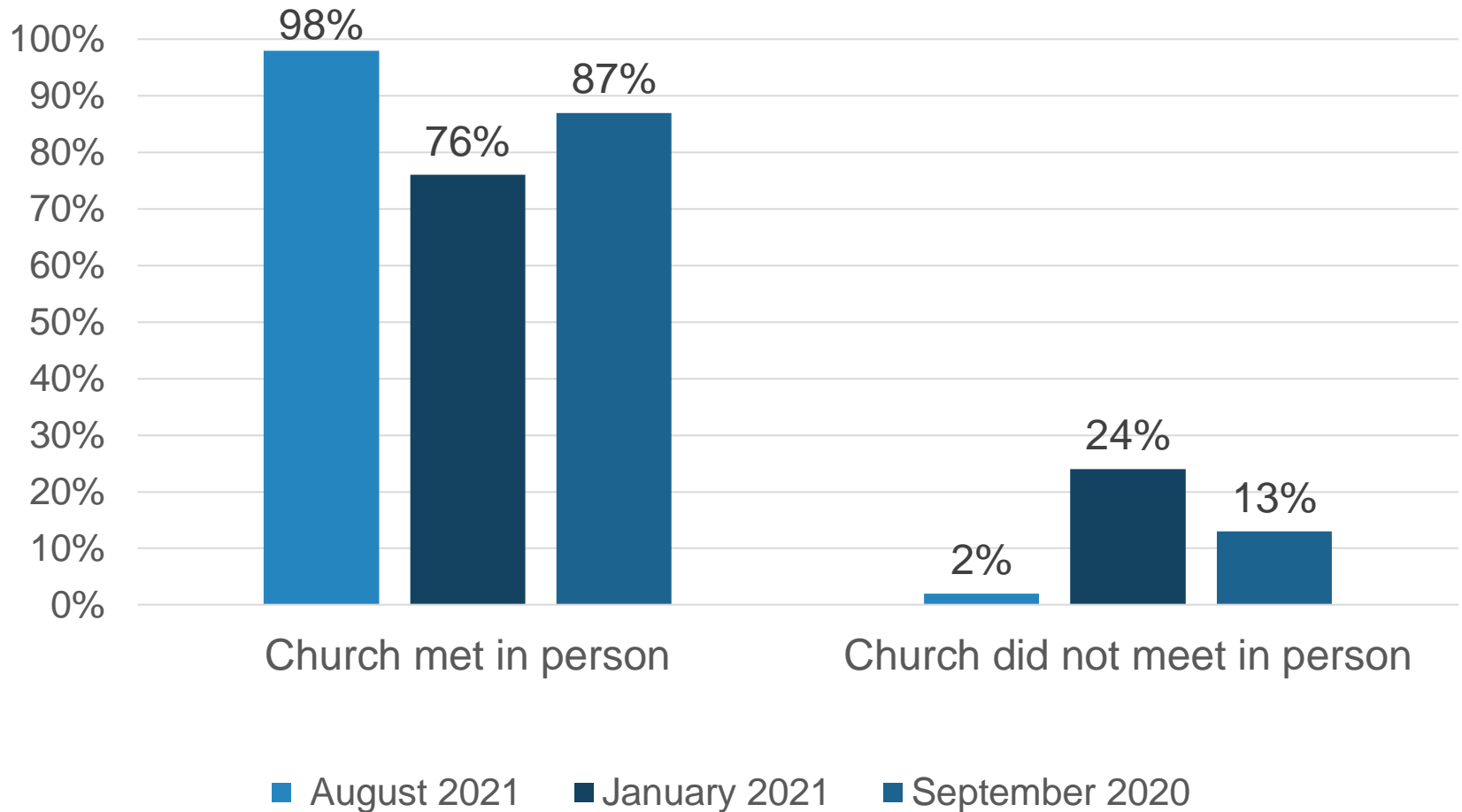


Lifewayresearch

Q: "For August 2021, what was your church's average worship attendance in-person on a typical weekend (including all ages from babies to adults but not counting anyone twice)?" *n*=987

23% more churches met in person in August 2021 than January 2021

Among Protestant Pastors

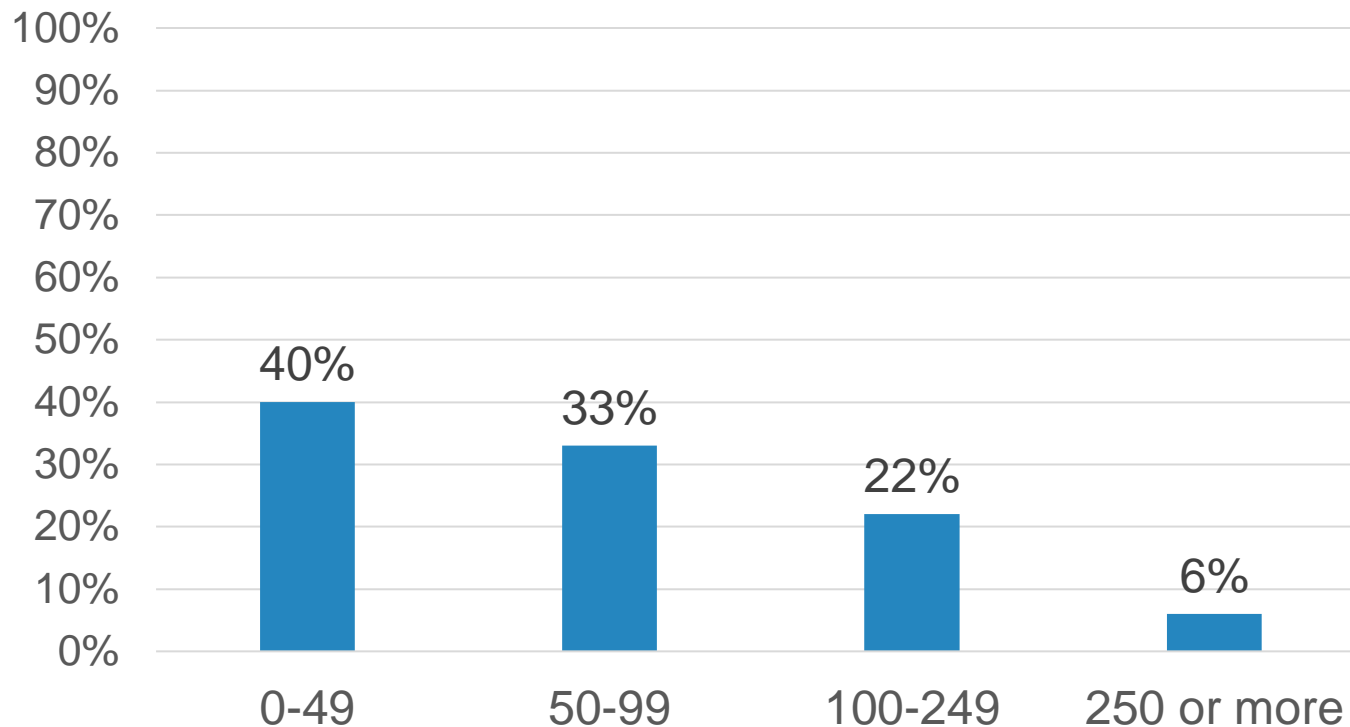


Lifewayresearch

Q: "For August 2021, what was your church's average worship attendance in-person on a typical weekend (including all ages from babies to adults but not counting anyone twice)?"

August 2021 average attendance for reporting churches

Among Protestant churches that met in person in August 2021

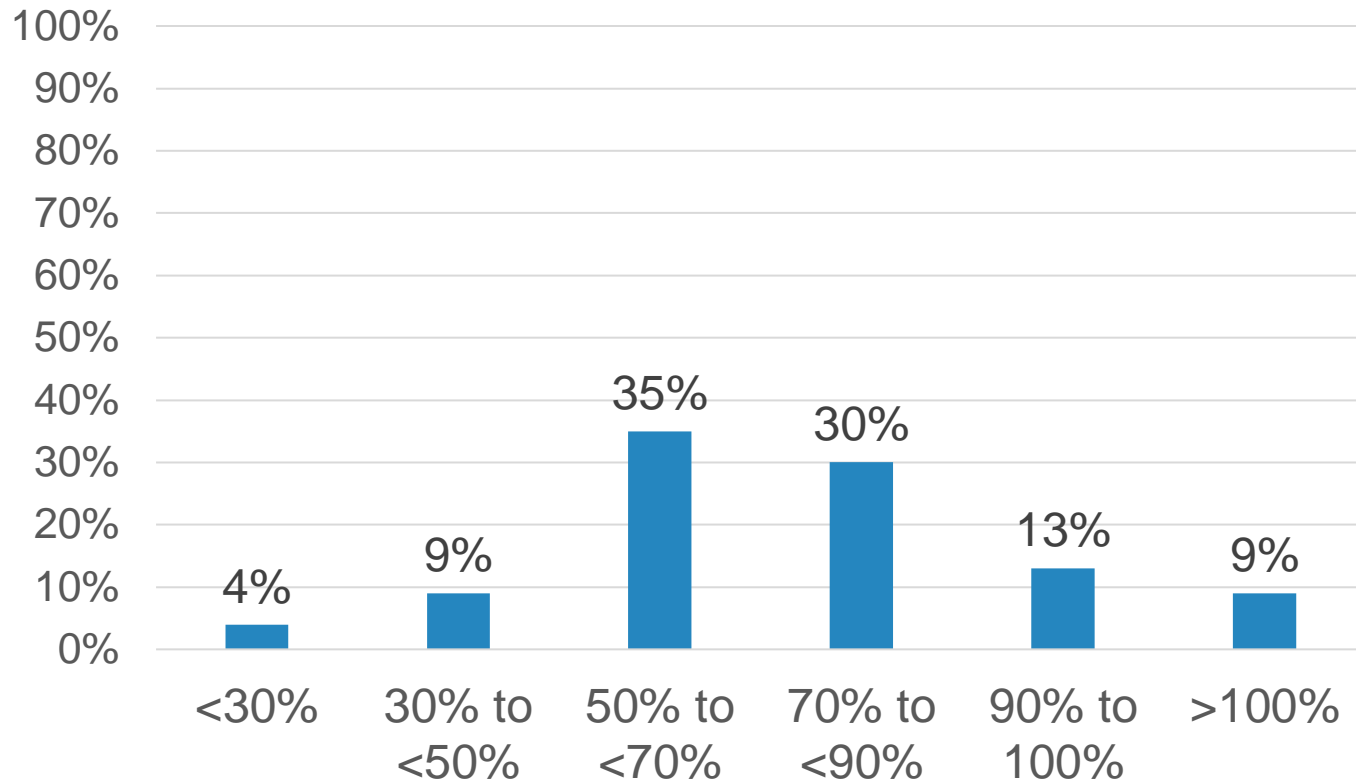


Lifewayresearch

Q: "For August 2021, what was your church's average worship attendance in-person on a typical weekend (including all ages from babies to adults but not counting anyone twice)?" *n*=969

August 2021 attendance as a percentage of January 2020 attendance

Among Protestant Pastors

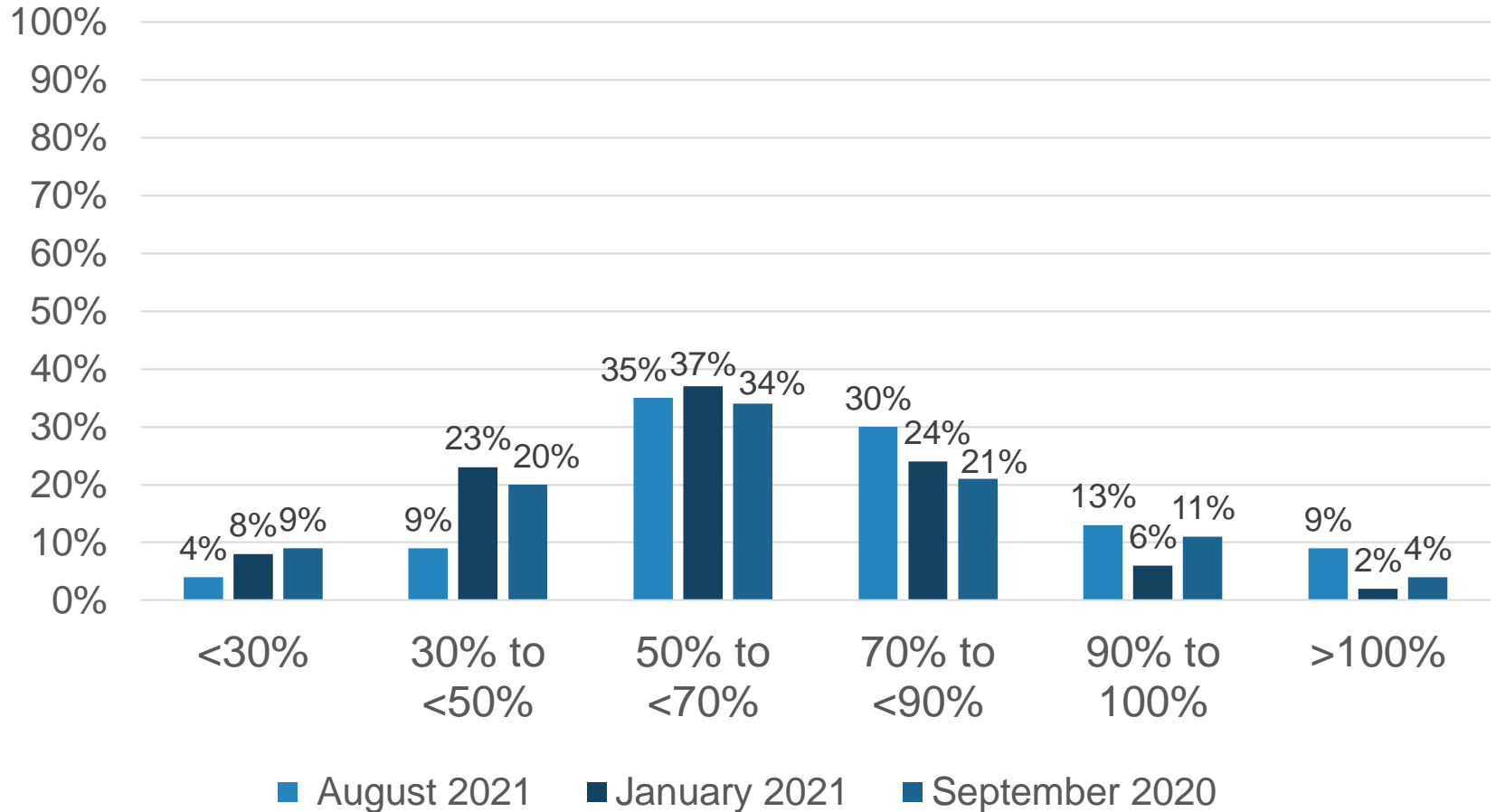


Lifewayresearch

Q: "For August 2021, what was your church's average worship attendance in-person on a typical weekend (including all ages from babies to adults but not counting anyone twice)?" *n*=932

Attendance for August 2021, January 2021, and September 2020 as a percentage of Jan./Feb. 2020 attendance

Among Protestant Pastors



Lifeway research

Q: "For August 2021, what was your church's average worship attendance in-person on a typical weekend (including all ages from babies to adults but not counting anyone twice)?"

Mean and median of attendance as a percentage of Jan./Feb. 2020

Among Protestant Pastors

Mean

- 63% - September 2020
- 60% - January 2021
- 73% - August 2021

Median

- 62% - September 2020
- 60% - January 2021
- 71% - August 2021

Significant Differences

Pastor

Ethnicity

Age

Gender

Education Level

Self-identified Evangelical/Mainline

Church

Region

Denomination

Average Attendance

Lifeway research

Significant Differences

Comparisons were made to determine if there are any significant statistical differences among the pastor's ethnicity, age, gender, education, self-identified Evangelical or Mainline.

AGE	GENDER	ETHNICITY	EDUCATION	Self-Identified
18-44	Male	White	No College Degree	Evangelical
45-54	Female	African American	Bachelor's Degree	Mainline
55-64		Hispanic	Graduate Degree	
65+		Other Ethnicities	Doctoral Degree	

Significant Statistical Differences

Comparisons were made to determine if there are any significant statistical differences among the church's region, denomination, and pre-COVID attendance.

REGION	DENOMINATION GROUP	Pre-COVID ATTENDANCE
Northeast	Baptist	0-49
South	Lutheran	50-99
Midwest	Methodist	100-249
West	Pentecostal	250+
	Presbyterian/Reformed	
	Christian/Church of Christ	
	Non-Denominational	

Note: Region is defined by the US Census locations

“For August 2021, what was your church’s average worship attendance in-person on a typical weekend (including all ages from babies to adults but not counting anyone twice)?”

- Pastors age 18-44 (100%) and 55-64 (99%) are more likely to select “Met in person” than pastors age 65+ (95%)
- White pastors (98%) are more likely to select “Met in person” than African American pastors (95%)
- Pastors in the Midwest (100%) are more likely to select “Met in person” than those in the Northeast (97%) and West (96%)
- Pastors of churches with attendance of 50-99 (99%) are more likely to select “Met in person” than those with attendance of 100-249 (97%)

“For August 2021, what was your church’s average worship attendance in-person on a typical weekend (including all ages from babies to adults but not counting anyone twice)?”

- Pastors age 65+ are more likely to select “0-49” (55%)
- Female pastors are more likely to select “0-49” than males (46% v. 38%)
- Pastors of Other Ethnicities (32%) are more likely to select “100-249” than White pastors (20%)
- Pastors with no college degree (42%) or a Master’s degree (45%) are more likely to select “0-49” than pastors with a Doctoral degree (27%)
- Mainline pastors are more likely to select “0-49” than Evangelical pastors (54% v. 34%)
- Pastors in the Northeast are the most likely to select “0-49” (55%)
- Presbyterian/Reformed are the most likely to select “0-49” (63%)

August 2021 Attendance as a percentage of January 2020 Attendance

- Pastors age 65+ (19%) are more likely to report August 2021 attendance between **90 to 100%** of January 2020 than pastors age 18-44 (12%) and 55-65 (11%)
- Female pastors are more likely to report August 2021 attendance between **50 to <70%** of January 2020 than males (42% v. 32%)
- African American pastors (25%) are more likely to report August 2021 attendance between **<30%** of January 2020 than White pastors (2%) or Other ethnicities (2%)
- Pastors with no college degree (17%) are more likely to report August 2021 attendance between **90 to 100%** of January 2020 than pastors with a Bachelor's degree (9%)
- Pastors in the South (37%) and West (41%) are more likely to report August 2021 attendance between **50 to <70%** of January 2020 than those in the Northeast (24%)

August 2021 Attendance as a percentage of January 2020 Attendance *continued*

- Methodists (43%) are more likely to report August 2021 attendance between **50 to <70%** of January 2020 than Baptists (33%)
- Pastors of churches with pre-COVID attendance of 50-99 (38%) and 100-249 (39%) are more likely to report August 2021 attendance between **50 to <70%** of January 2020 than those with attendance of 0-49 (25%)
- Pastors of churches with pre-COVID attendance of 0-49 are the most likely to report August 2021 attendance between **90 to 100%** (23%) or **>100%** (19%) of January 2020

Pastors' Descriptions of In-person Worship Attendance

A SURVEY OF AMERICANS PROTESTANT PASTORS

Lifeway **research**